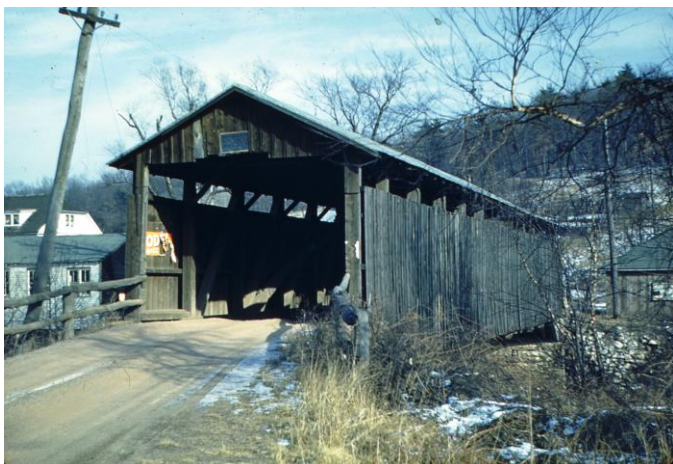


LOST COVERED BRIDGES OF COLUMBIA COUNTY

W. M. Baillie & George Holdren

Columbia Countians are justly proud of the county's twenty-four standing covered bridges. These are evocative of a romantic mode of travel in our past, and a major tourist attraction. Few residents, though, are aware that these bridges are just a fraction of the total number of such spans in the county in past years. Over a hundred additional sites in the county had covered wooden bridges at some point in the past two centuries.

These lost bridges included spans across creeks and runs and the Pennsylvania Canal as well as lengthy multi-span crossings of the North Branch of the Susquehanna River. The list also includes thirteen bridges built to carry railroad traffic.



#41 Mainville covered bridge crossing Catawissa Creek
(CCHGS 10-1061)

Although covered bridges evoke romance and nostalgia for a less-hurried way of life, they were roofed for the most practical of reasons: to prevent water damage to the timbers. Rainwater and melting snow could seep into the wood structural members and bring on rot and swelling-ice damage. The extra cost to erect and maintain a roof was easily offset by the extended lifespan of a roofed bridge. Ironically, in wintertime the County paid men to cart snow onto the bridge decks so as to allow sleighs to cross.

Most of Columbia County's lost bridges are catalogued in the online site **Covered Spans of Yesteryear**, a volunteer national website that lists thousands of past and present structures throughout the country. Find it at: www.lostbridges.org



#130 Superstructure of a covered bridge at Forks showing the
Burr arches (CCHGS 11-0086)

For each bridge, this website includes these categories of information when available:

Township and Town or Village

Bridge name

Stream spanned

Truss type

Length of span and of bridge

Roadway width

Year built and Year lost

Latitude and longitude

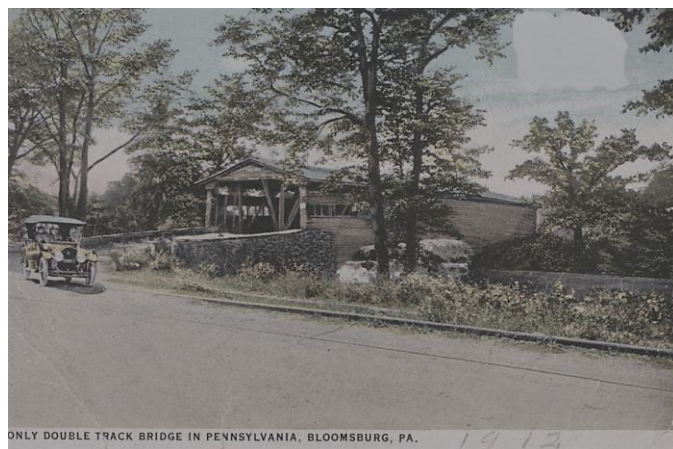
The site also provides:

Photos for most bridges

Road directions

Links to a road map (GoogleMaps) and
topographic map (from USGS)

#66 Double-Track Bridge over Fishing Creek at Bloomsburg,
from a 1912 color postcard (CCHGS 19-0038)



To use the **Covered Spans** website, on the homepage select Search inventory. Then on the next page, in the box Select a state scroll down to click on Pennsylvania, then in the adjacent County box click on Columbia County; then click on Show Items. The

ensuing page lists the first twenty bridges (in the site's numbering system, Columbia County is PA/38-19). Note that there are six pages of about twenty bridges each; clickable page numbers **1-6** are shown in blue at the top and bottom of each page.

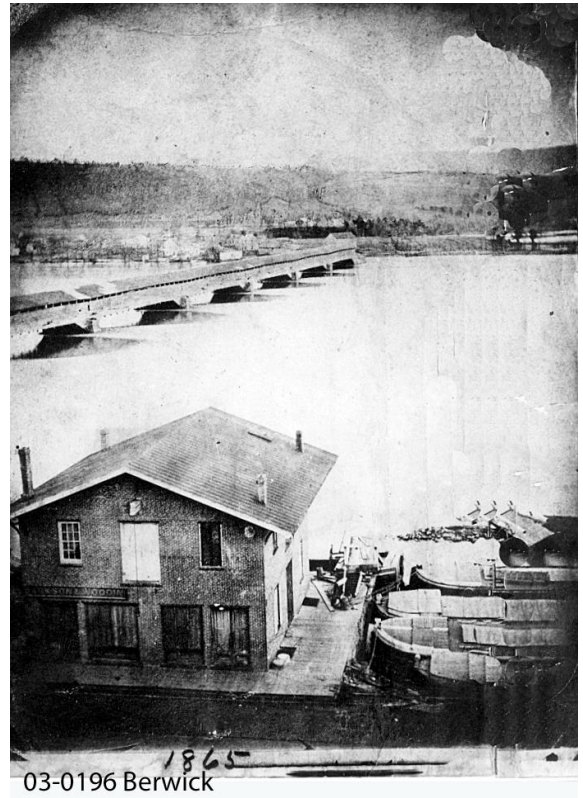
The **Covered Spans** site includes usually one to four photographs for each bridge. Our Society photograph collection includes many additional bridge photos. You can search for these by bridge name on the Society website: **colcohist-gensoc.org** Note, however, that the bridge name may be different from the name in the **lostbridges** site. Entering "covered bridge" will bring a list of over 230 bridge photos (some of these bridges are not in Columbia County).

Listed below are eighty-five lost covered bridges of Columbia County, arranged by watershed, upstream from the creek mouth. The bridge numbers in the left column help locate the bridges on the adjacent map. These numbers are those assigned by county officials, except that numbers beginning with "X" are for map reference only; an asterisk preceding a number indicates a bridge which is still standing but has been moved from its original site. The third column lists the stream crossed, when different from the heading; "Br." means Branch. The



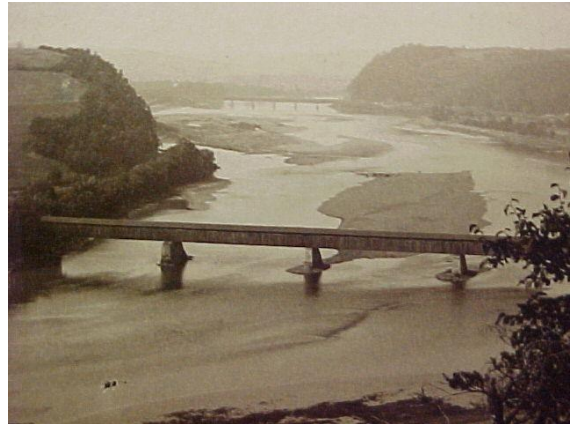
#153 Laubach or Welle Hess covered bridge in Sugarloaf Township (CCHGS 19-0026)

"SPAN" is from abutment to abutment, not the total bridge length. The right-hand column cites the bridge number in the **lostbridges** website, omitting from each "PA-38-19-".



#X2 Berwick-Nescopeck Bridge with canal boats in the foreground (CCHGS 03-0196)

There may be a score or more additional bridges to be added to the list; the use in the past of alternate names for many bridges makes it difficult now to make a "final" list. If you have further information about any lost covered bridges, or photographs, please contact the Society.



#X1 Toll bridge across the Susquehanna River North Branch at Catawissa, looking upstream toward the Philadelphia & Reading RR bridge (CSOY PA.38-19-72-2x)

CC NAME SPAN YEAR YEAR CSY
NO. BUILT LOST NO.

ROARING CREEK

5 Gorge 74' 1862 1966 40x
6 Riegel 90' 1871 1979 35x
13 Helwig N.Br. 120' c.1955 c.1939 53x
16 Yeager N.Br. 64' 1972 02x
*19 Wagner N.Br. 50' 1856 1981 15x
21 Mill Grove N.Br. 45' 1956 54x
24 Rohrbach S.Br. 48' 1846 1986 31x
25 Reeder S.Br. 99' 1885 1972 30x
26 Knoebel S.Br. 69' 1869 1940 90x
32 Walter's Mill S.Br. 60' 1941 87x
33 Williams S.Br. 73' 1870 1897 88x
36 Bear Gap S.Br. 50' by 1938 89x
37 Brush Valley S.Br. 83' —

CATAWISSA CREEK and Tributaries

38 Second Street 140' c1867 1904 108x
39 Berninger's/McKelvy's 100' c1887 1904 66x
41 Mainville 92' 1972 28x
42 Shuman's by 1903 101x
49 Schell or Beaver Valley 81' 1958 52x

BEAVER RUN

-- Beaver Run 1955 —

TEN-MILE RUN

53 Yohe Mill 29' —

FISHING CREEK and Tributaries

59 Barton Hemlock Cr. 46' —
60 Red Mill Hemlock Cr. 35' by 1956 55x
61 Ivy Hemlock Cr. 41' by 1921 97x
66 Doubletrack 159' 1840 1921 71x
67 Red Rock 181' 1939 82x
102 Shaffer 163' by 1939 70x
107 Seybert / Light Street 161' 69x
110 Bowman's Mill 135' by 1936 68x
111 Kline's Green Cr. 61' 1961 04x
113 Kramer's Mud Run 40' 2007 23x
114 Heacock Mud Run 49' by 1959 59x
116 Ikeler/Rhone Green Cr. 47' 1958 50x
117 Lemon Green Cr. 134' by 1939 75x
130 Forks 90' 1955 56x
124 Jonestown Huntington Cr. 90' 1960 01x
125 Wilson's Pine Cr. 60' by 1921 76x
127 Buckalew Pine Cr. 42' 1965 27x
130 Forks c. 1955 —
131 East Zaner 82' 1947 1950s 57x
132 West Zaner 61' 1947 1950s 58x
*133 McHenry Mill Raven Cr. 37' 1839 46
138 Joe Ash Raven Cr. 27' 1963 38x
139 Karns or Benton 104' 1890s 1926 78x
140 West Creek West Cr. 65' by 1955 62x

CC NAME SPAN YEAR YEAR CSY
NO. BUILT LOST NO.

143 Mendenhall West Cr. 61' by 1956 63x
145 Thomas West Cr. 63' by 1939 81x
*146 John R. Cole West Cr. 1875 1936 39
147 Edison 151' —
149 Cole's Creek Cole's Cr. 99' by 1939 67x
150 Lewis Cole's Cr. 42' 1924 —
152 Brad Long 75' 1934 64x
153 Laubach or Welle Hess 126' 1871 1981 13x
156 Y Bridge East Br. 56' 1887 1983 22x
158 Central West Br. 91' 1934 100x
161 Elk Grove West Br. 68' by 1939 72x

LITTLE FISHING CREEK

68 Mausteller / Vanderslice 101' 03x
70 Stauffer / Sands 100' 1972 19x
71 Mordansville 90' 1963 07x
73 Wilson 81' by 1939 74x
76 DeMott / Eyersgrove 60' 1845 aft. 1939 61x
79 Beyer's 57' by 1959 17x
82 Lower Iola 75' by 1939 95x
83 Upper Iola 75' by 1939 73x
87 Master's / Sereno 57' after 1939 60x
*89 Sereno / E. Thomas 96x
90 Greenley 58' 1961 09x
94 Cole's Mill 55' 1962 24x

BRIAR CREEK

163-1 Ash Mill —
165-1 Eck —
*167 Fowlersville 30' 1886 1986 05

SUSQUEHANNA RIVER NORTH BRANCH

X1 Catawissa c1150' 1875 1896 77-2x
X2 Berwick-Nescopeck 1260' 1837 1904 85-2x

PENNSYLVANIA CANAL NORTH BRANCH

X3 James Quick (Rupert) P02x
X4 Berwick Canal 60-70' 1826 by 1910 92x

RAILROADS

Over Catawissa Creek or its tributaries

X5 Catawissa RR 100'+ 1904 83x
X6 DH&WB RR 220' 1904 99x
X7 Paper Mill Unnamed Run P01x
X8 Mainville RR 727' 1853 1865 98-2x
X9 Fisher's Run 1853 1898 102-2x
X10 Mine Gap 870' 1853 104x
X11 Long Hollow 1853 1904 103x
X12 Stranger Hollow c.440' 1888 105x

Over Fishing Creek

X13 DL&W RR 106x

Over Susquehanna River North Branch

X14 Philadelphia & Reading 1395' 1898 65x

Over North Branch Canal

X15 Philadelphia & Reading 107x

LOST COVERED BRIDGES OF COLUMBIA COUNTY

