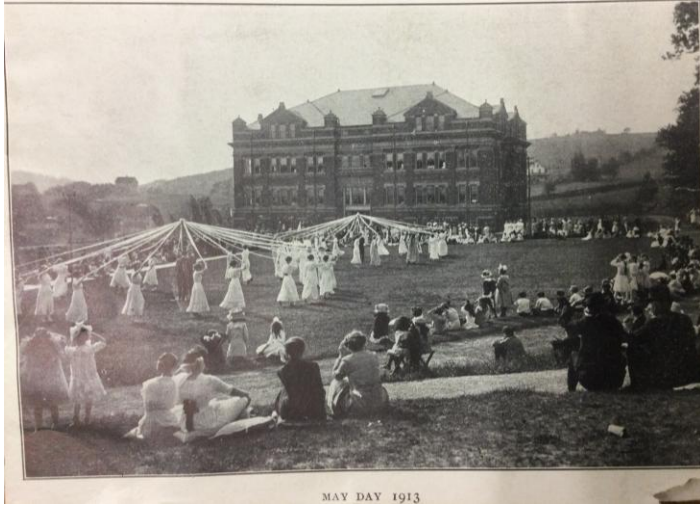


May Day 1913

By George Holdren

A picture identified as May Day 1913 with a May Day celebration in progress obviously needed correct identification. On the reverse side was a typewritten label proclaiming “Building in back is Columbia County Courthouse, 1847, designed by Napoleon Lebrun”. Others had inscribed their opinions “What???” and “I don’t think so!!” Napoleon LaBrun, 1821-1901, was an American architect. He designed churches and theatres in Philadelphia and then moved to New York City. He designed early skyscrapers (The Metropolitan Life Insurance Company Tower and The Home Life Building). He also designed the first Columbia County Courthouse at Bloomsburg. A quick



look at the picture revealed the size of the building and landscape could not be that of the Courthouse. A search of our vast photo collection disclosed several pictures of buildings at the then State Normal School. The May Day celebration was held on the lawn of Science Hall. Obviously, someone had researched Napoleon LaBrun, knew that he had designed the courthouse, and erroneously ascribed that name to the building in the picture.

Ed~ Frederick L. Olds of Wilkes-Barre was the architect for Science Hall.
